



METAL MITRE TOOL Quickly and easily cuts a precise 90° notch out of vinyl, laminate, and up to 1/16" aluminum, and to a depth as much as 1". When folded at the notch, edge moldings form a perfectly mitered corner. When a radius is planned on T-moldings, remove two or more close notches from the barb at the portion to be curved. Made of precision hardened steel for a long service life. [Cat. No. MM-444S](#), Complete Handle & Die Set, Length 11", Wt 2 lb
[Cat. No. MM-442D](#), Die Set Only, Wt 8 oz [Cat. No. MM-440H](#), Handle Only, Length 11", Wt 1.5 lb

EDGE BANDING TRIMMERS



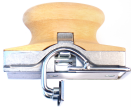
DOUBLE EDGE EDGE BANDING TRIMMER Simultaneously trims both edges of most soft edgbanding materials. Duplicate blades on both sides will flush or bevel trim panels from 1/2" to 1 1/2" thick. Simply place trimmer on panel edge, squeeze the sides snugly together, then slide forward along panel edge. One side can be used alone as a single-sided trimmer. **PRACTICAL™** brand. Rounded corners for comfortable grip, pumpkin color is easy to find. (Not for high pressure laminates)
[Cat. No. ET-100](#), Blister Packed for Display, Size 4" x 1 7/8" x 1 3/4", Wt 5 oz
[Cat. No. ET-100RP](#), Repl. Set of 6 Blades, Wt 1 oz



SINGLE-SIDED EDGE TRIMMER An easy-to-use edge trimmer that provides careful control in trimming. It trims PVC, ABS, polyester, and all other types of soft edgbanding material. It has a straight cutting blade for flush trimming and will cut in either direction. The long life, High Speed Steel cutter is replaceable.
[Cat. No. ET-6](#), Length 3 5/16", Wt 3 oz [Cat. No. ET-6RP](#), Repl. Blade, Wt 1 oz



EDGE BANDING EDGE TRIMMER Single edge trimmer flush trims around outside curved sections as well as straight edges. Trims most soft edgbanding materials. With a fixed edge guide, it is light weight and easy to use.
[Cat. No. ET-7](#), Length 5 3/4", Wt 1 oz



VARIKANT EDGE BANDING EDGE TRIMMER Trims flush or any angle from 0° to 45°, forward and backward. Wing nut locks cutter at selected angle. Closeness of cut is adjustable with 4 mm hex key. It has a High Speed Steel blade that can be repositioned as much as 1" along its length to provide fresh cutting edge for exceptionally long blade life. A lifetime precision quality tool.

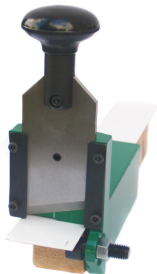
[Cat. No. VK-41](#), Size 3 1/2"L, 2"W, 2"H, Wt 12 oz [Cat. No. VK-41RP](#), Repl. Blade



RADZI FIXED-MODE EDGE BANDING EDGE TRIMMER Plastic edge guides are provided for 0°, 30°, and 45° trimming. Same blade as HSS VK-41RP blade above. Another lifetime precision quality tool.
[Cat. No. RZ-42](#), Size 3 1/2"W, 2"L, 3"H, Wt 1lb



RADZI COMBI VENEER CUTTER This tool cuts all veneers up to 1 mm thick. The 0.2 mm thick blade cuts with, across, or diagonally to the grain. For left-hand operation, the edge guide can be mounted on other side. Comes with package of 10 spare blades.
[Cat. No. RV-43](#), Size 5 1/2"L, 2"W, 4"H, Wt 1 lb
[Cat. No. RV-43RP](#), Pkg of 10 Repl. Blades



ALL METAL END TRIMMER Trims all types of pliable edgbanding material. A 1/4" thick steel blade and overall heavy-duty construction cuts even the heaviest types. Body is cast aluminum for light weight. An eccentric cam-stop adjusts closeness of cut, and it is locked in place by a lock nut. There are no breakable plastic parts, assuring a long trouble-free life.
[Cat. No. EN-9](#), Size 7" x 6", Wt 22 oz
[Cat. No. EN-9RP](#), Repl. Blade



BAND-IT EDGE TRIMMER Trims wood veneer, melamine, PVC, and polyester edgbanding materials. Trims flush and cleanly, in both directions. Blades are replaceable. Compact size. Blister package for pegboard display. 12/master carton.

[Cat. No. BD-5](#), Edge Trimmer, Length 3", Wt 2 oz
[Cat. No. BD-5RP](#), Pkg of 5 Repl. Blades